

MAIN FLOOR PLAN

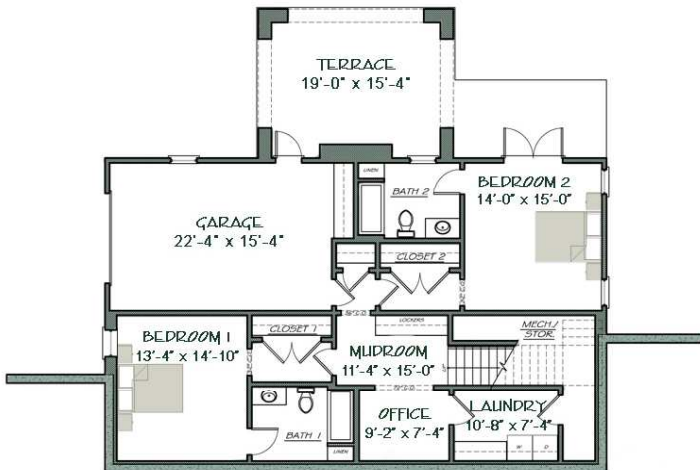


The Stratford

Main Floor Heated Area: 1632 sf
 Terrace Floor Heated Area: 1074 sf
 Total Heated Area: 2706 sf

Bedrooms/Baths 3/3.5

Width: 51'
 Depth: 32'



TERRACE FLOOR PLAN



The individual plans and designs contained on this page are copyrighted, and as such, are the express property of The Carver Group and Wright Design. No home may be constructed based on these images without the consent and non-exclusive license from The Carver Group and Wright Design.

The Carver Group
www.carvergroupinc.com
 864-834-8500